

# MONTHLY MEMBERSHIP PROGRESS REPORT

LOCATION AUSTRALIA

District 201Q1

Results as of: 1/31/2022

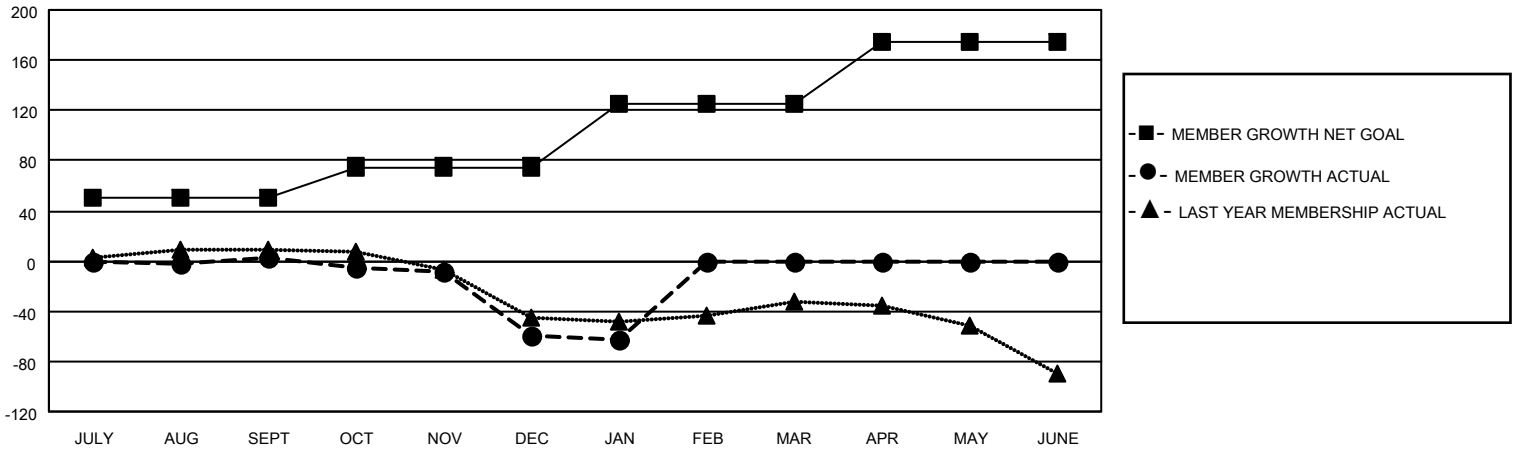
Clubs			
RESULTS FOR 2021-2022			
QUARTER	NEW CLUB GOAL	NEW CLUBS	DROPPED CLUBS
JULY/AUG/SEPT	0	0	1
OCT/NOV/DEC	0	0	1
JAN/FEB/MAR	1	0	1
APR/MAY/JUNE	1	0	0

Members			
RESULTS FOR 2021-2022			
QUARTER	MEMBER GROWTH NET GOAL	MEMBER GROWTH ACTUAL	DROPPED MEMBERS ACTUAL (including transfers)
JULY/AUG/SEPT	50	43	31
OCT/NOV/DEC	25	37	96
JAN/FEB/MAR	50	11	9
APR/MAY/JUNE	50	0	0

**GOALS AND ACTUAL NEW CLUBS CUMULATIVE**



**GOALS AND ACTUAL MEMBERS CUMULATIVE**



**DROPPED CLUBS: 3**

**35 CLUBS OF 75 ADDED 1 OR MORE NEW MEMBERS**

**GENDER DISTRIBUTION**

MALE	888 (60.66%)
FEMALE	576 (39.34%)
NON BINARY	0 (0.00%)
PREFER NOT TO ANSWER	0 (0.00%)

**DROPPED MEMBERS**

[CLICK HERE FOR CUMULATIVE MEMBERSHIP DATA](#)

DECEASED	14
CLUB CANCELLED	0
OTHER	122
<b>TOTAL</b>	<b>136</b>

TOTAL FAMILY UNIT MEMBERS 263

FAMILY MEMBERS PAYING HALF DUES 133